

# How to Read the iPERL

## Quick Guide

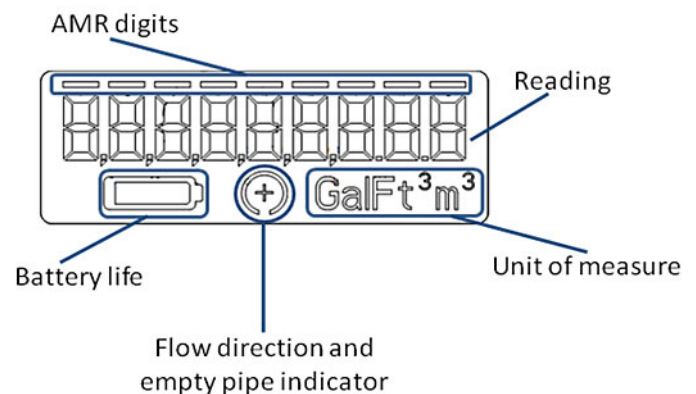
### THE SENSUS iPERL SYSTEM

The iPERL water management system offers unparalleled low flow accuracy with high flow durability. Innovative magnetic technology allows for the capture of previously unmeasured low flow, and drives additional revenue for the utility. The iPERL system maintains its accuracy over a 20-year lifetime through its 100% lead-free design with no moving parts. Issues experienced in the field are quickly identified through the use of AMR/AMI connectivity. The iPERL also provides the ability to report diagnostics and alarms.

### ELECTRONIC REGISTER

The high resolution 9-digit hermetically sealed electronic register with LCD display was designed to eliminate problems resulting from dirt, lens fogging and moisture contamination in pit set environments. The iPERL also provides built-in tamper protection. The tempered glass register cover displays readings with the AMR/AMI digits highlighted. Direction of flow and units of measure are also easily readable on the register display. The iPERL register features an AMR/AMI resolution and unit of measure that are fully programmable, and integral customer data logging compatible with UniPro software tools. The large, easy to read display also includes battery life, empty pipe and forward/reverse flow indicators.

### REGISTER DISPLAY



**AMR Digit Bar (4 to 8 Digits):** The AMR digit bar shows which digits will be reported when the meter is read through the communications interface.

**Battery Icon:** The Battery Icon will turn on when the battery is low or the meter is near the end of life.

#### Flow Icon:

Flow Condition	Display
Positive Flow	Circle with +
Negative Flow	Circle with -
Low Flow Cut off	No icon displayed
Empty Pipe	Empty Circle

**Unit of Measure:** Gallon (GAL), Cubic Feet (FT³), Cubic Meter (M³)

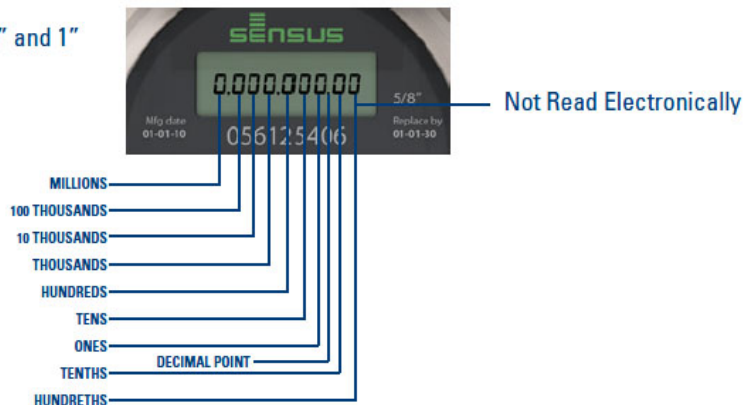
When removing the meter lid to read the meter please do so carefully or you may damage the wiring to the radio transmitter. Remove the lid slowly and lay the lid to the side of the meter, making certain not to harm any of the components.

## READING THE IPERL REGISTER

### GALLONS REGISTERS

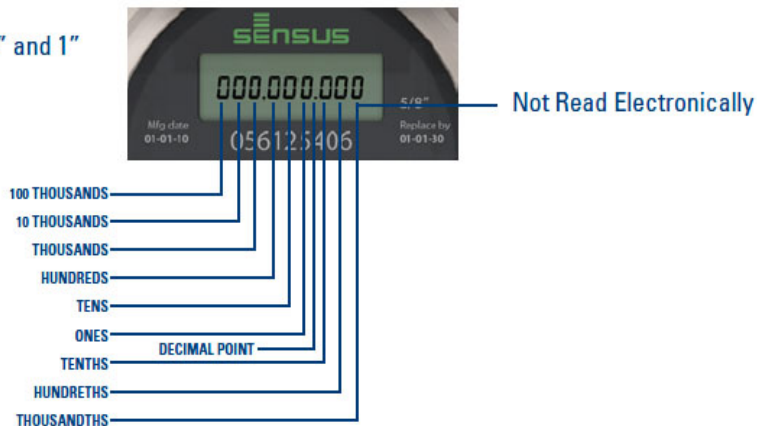
City of Mt. Shasta meters measure in gallons.

5/8", 3/4" and 1"



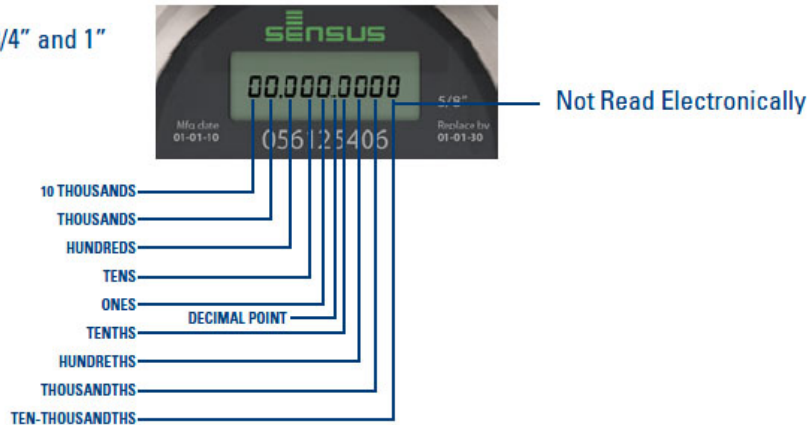
### CUBIC FEET REGISTERS

5/8", 3/4" and 1"



### CUBIC METER REGISTERS

5/8", 3/4" and 1"



© All products purchased and services performed are subject to Sensus' terms of sale, available at either; <http://na.sensus.com/TC/TermsConditions.pdf> or 1-800-METER-IT. Sensus reserves the right to modify these terms and conditions in its own discretion without notice to the customer.

This document is for informational purposes only, and SENSUS MAKES NO EXPRESS WARRANTIES IN THIS DOCUMENT. FURTHERMORE, THERE ARE NO IMPLIED WARRANTIES, INCLUDING WITHOUT LIMITATION, WARRANTIES AS TO FITNESS FOR A PARTICULAR PURPOSE AND MERCHANTABILITY. ANY USE OF THE PRODUCTS THAT IS NOT SPECIFICALLY PERMITTED HEREIN IS PROHIBITED.